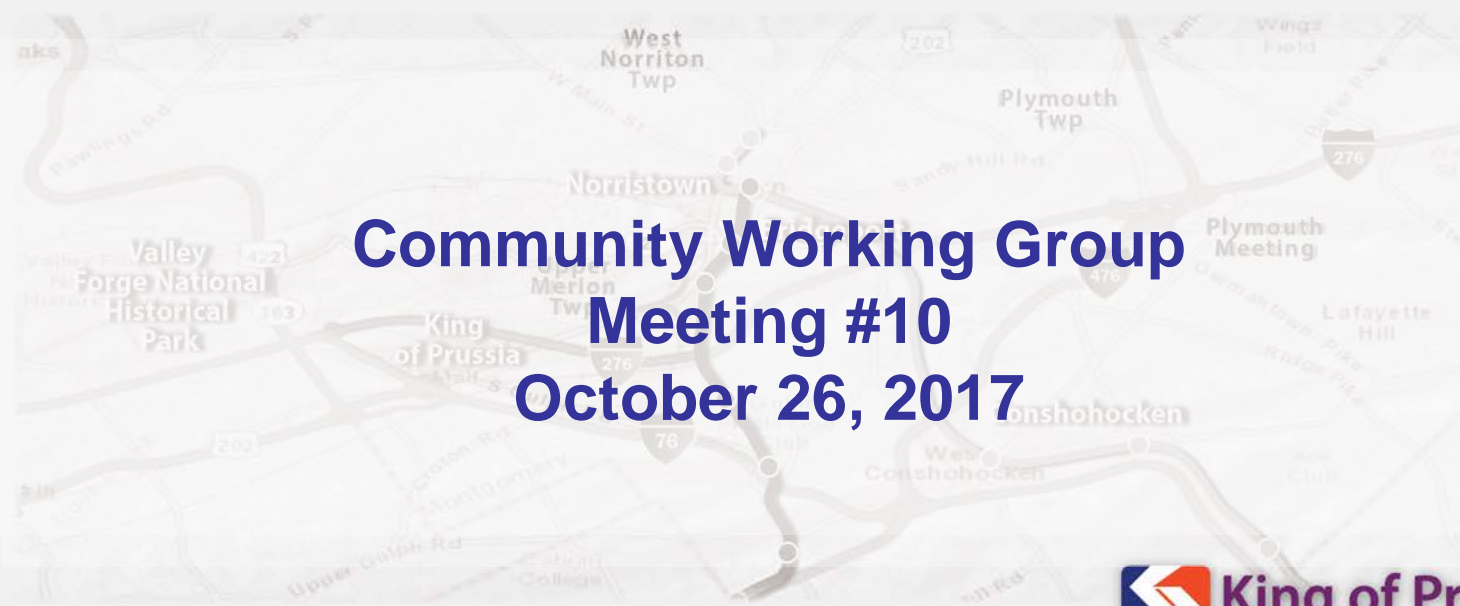


King of Prussia Rail Project

An Extension of the Norristown High Speed Line



**Community Working Group
Meeting #10
October 26, 2017**

Norristown High Speed Line Extension Draft EIS



CWGW Meeting #10

Agenda

- NEPA Basics
- DEIS Findings
 - Benefits and Impacts
 - Minimization and Mitigation
- CWGW Role as Project Advances

NEPA Basics

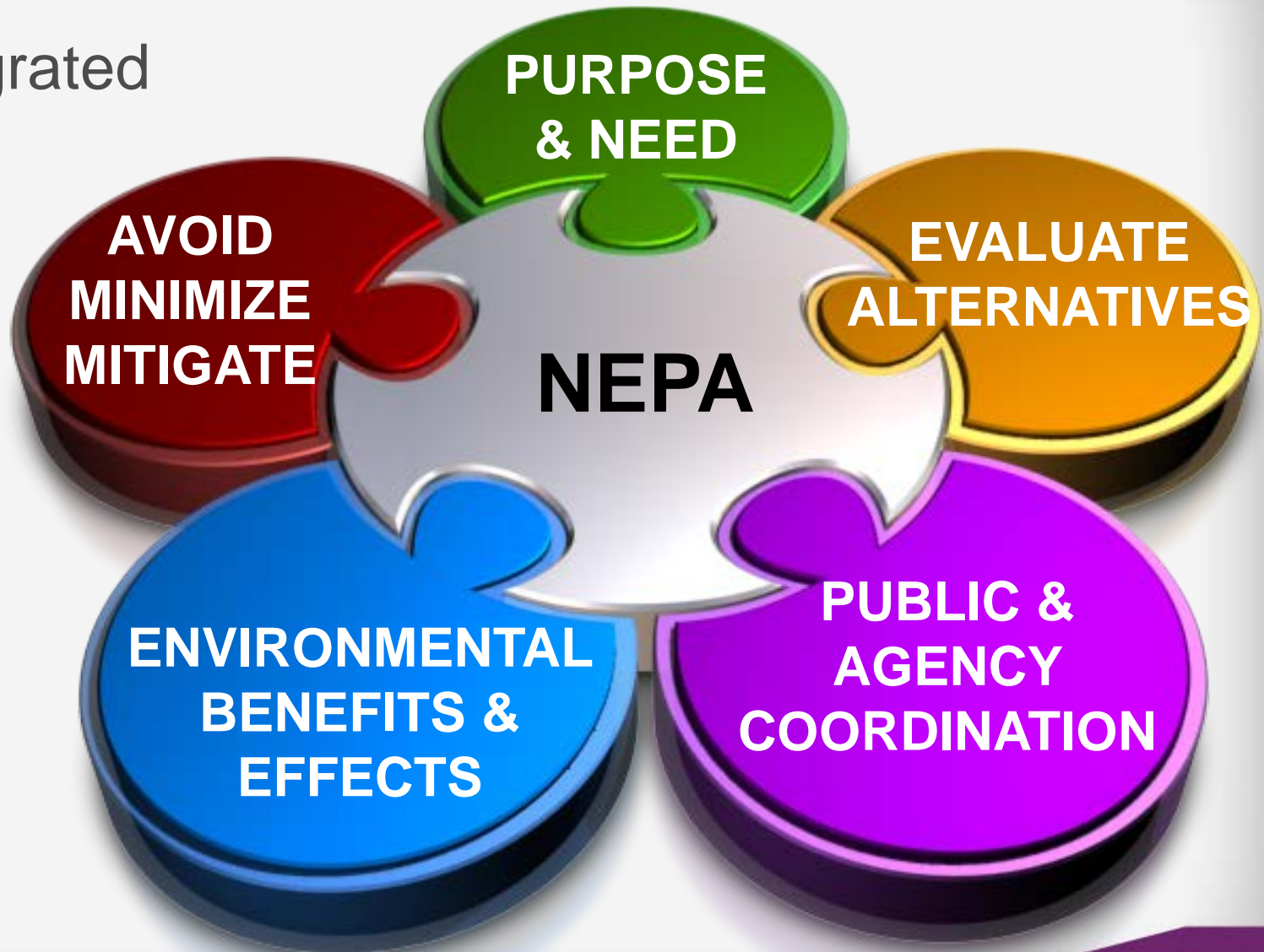
- Consider consequences of federal actions on the human and natural environment, including trade-offs
- Evaluate alternative courses of action that could achieve purpose and need
- Discuss situation with interested and affected parties
- Document decisions and outcomes



National Environmental Policy Act

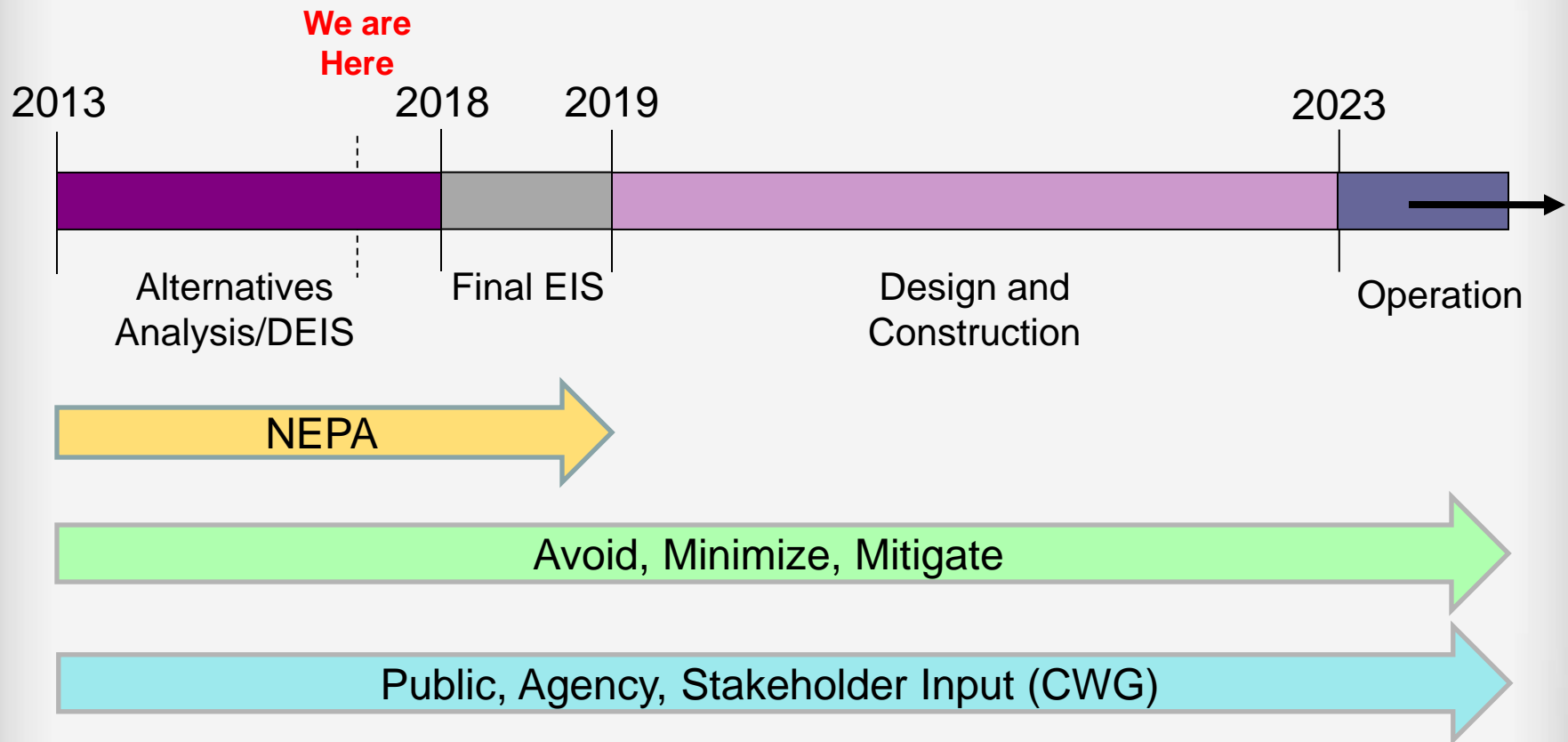
NEPA Basics

An integrated
process



NEPA Basics

Project Schedule



DEIS Document

- Compares 5 Action Alternatives and a No Action Alternative
- Recommends a Locally Preferred Alternative and presents two design options
- Considers public and stakeholder input
- Analyzes and assesses benefits and effects: natural and community environment
- Identifies possible minimization and mitigation strategies

Evaluates Benefits and Effects of the 5 Action Alternatives and 2 Design Options On:

- Transportation and Traffic
- Land Use and Economic Development
- Community Facilities
- Property Acquisitions and Displacements
- Parks, Recreational Land and Open Space
- Historical and Archaeological Resources
- Visual Effects
- Air Quality
- Noise and Vibration
- Natural Resources
- Contaminated and Hazardous Materials
- Energy Use
- Utilities Effects

DEIS Findings – Property Acquisitions

Factor	No Action Alternative (b)	Action Alternatives (c)						
		PECO-1 st Ave.	PECO/TP-1 st Ave. and its Design Options			PECO/TP-N. Gulph	US 202-1 st Ave.	US 202-N. Gulph
			PECO/TP-1 st Ave. (recommended LPA)	Design Options Differences Compared to PECO/TP-1 st Ave.				
				PA Turnpike North/South Option	9/11 Memorial Avoidance Option			
Partial Acquisitions (Number of Parcels)								
Residential	un	59	24	-24	ND	24	2	2
Commercial	un	46	46	ND	+1	30	95	69
Parks	un	2	0	ND	ND	0	0	0
Other (a)	un	13	14	-1	-1	15	7	8
Totals	un	120	84	-25	ND	69	104	79
Full Acquisitions (Number of Parcels)								
Residential	un	4	4	-4	ND	4	19	19
Commercial	un	4	4	ND	ND	4	4	4
Parks	un	1	0	ND	ND	0	0	0
Other (a)	un	3	3	ND	+1	2	2	1
Totals	un	12	11	-4	+1	10	25	24

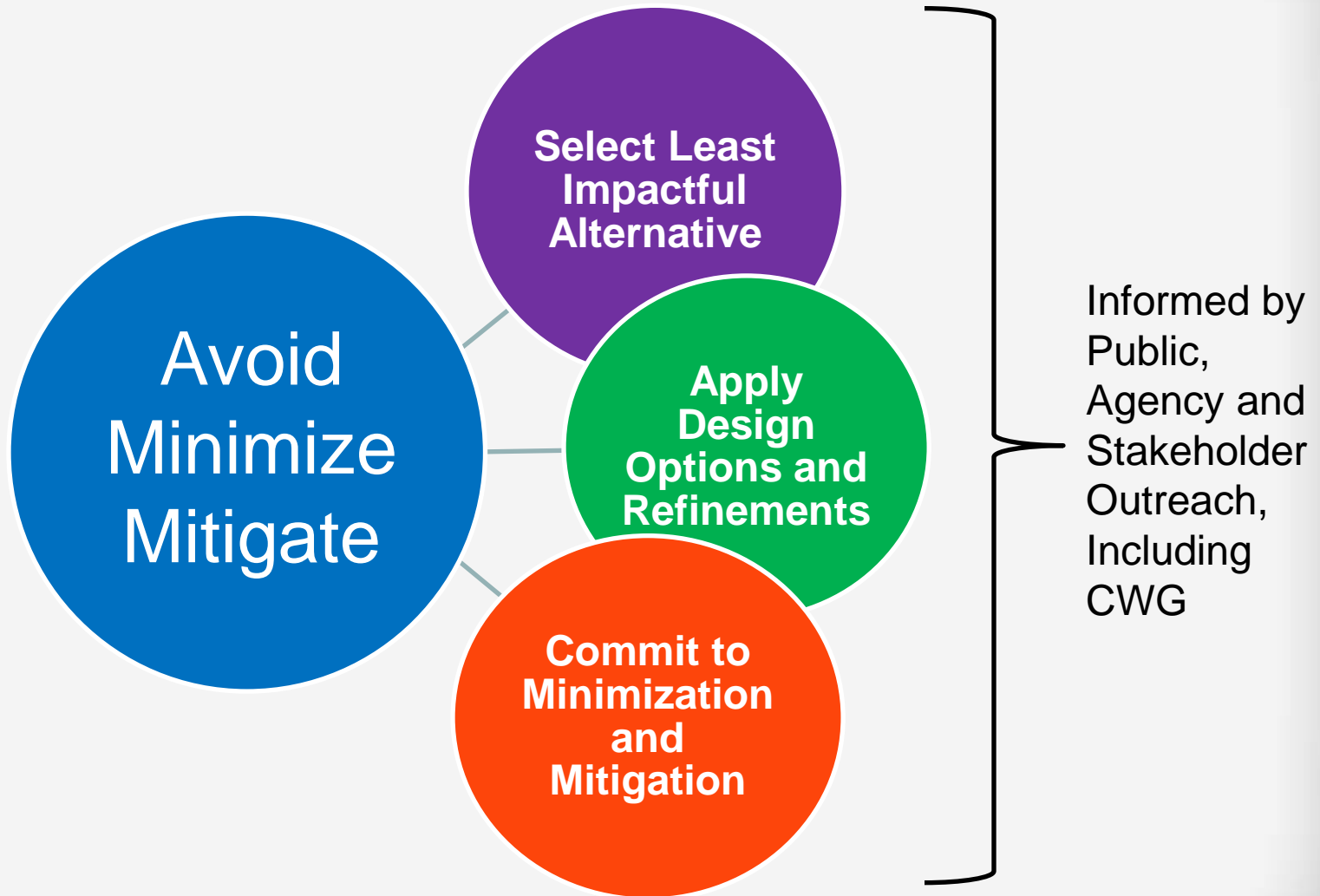
- Notes:
- ND = no difference compared to recommended LPA
 - (a) Other: transportation, utilities;
 - (b) un = unknown;
 - (c) Quantities are based on conceptual planning and engineering to date and subject to refinement as design advances

DEIS Findings – Noise Screening

Action Alternative		Moderate ¹			Severe ¹			Totals			
		FTA Land Use Category									
		1	2	3	1	2	3	1	2	3	
Action Alternatives	PECO–1 st Ave.		0	66	3	0	0	0	0	66	3
	Design Options Compared to PECO/TP-1 st Ave.	PECO/TP-1 st Ave. (recommended LPA)	0	33	2	0	0	0	0	33	2
		PA Turnpike North/South Option	ND	-29	ND	ND	ND	ND	ND	-29	ND
		9/11 Memorial Avoidance Option	ND	ND	-1	ND	ND	ND	ND	ND	-1
	PECO/TP–N. Gulph		0	32	2	0	0	0	0	32	2
	US 202–1 st Ave.		0	29	3	0	0	0	0	29	3
	US 202–N. Gulph		0	28	3	0	0	0	0	28	3

ND = no difference compared to recommended LPA; 1 = The number of exceedances of the moderate and severe impact criteria categories are reported for each of the three FTA land use categories: Category 1 is highly sensitive receptors; Category 2 is residences; and Category 3 is institutional properties.

Avoid, Minimize, Mitigate



Identifies Possible Minimization and Mitigation Strategies

- Avoid
 - Select Alternative or Design Option with No Impact (An Example, recommended LPA Avoids PECO Corridor west of PA Turnpike)
- Minimize
 - Modify Alignment (An Example, PA Turnpike North/South Design Option)
 - Refine Selected Alternative as Design Advances (An Example, Reduce LOD)

Identifies Possible Minimization and Mitigation Strategies

- Minimize (Continued)
 - Manage Impacts (An Example, Construction Management Plans that Prescribe Contractor Activities to Protect Private Property, Maintain Traffic Access and Control Noise)
- Mitigate
 - Apply Design Elements to Eliminate Impact (An Example, Privacy Screening)

Minimization and Mitigation Example (Applies to Each Action Alternative and Design Option):

- Potential Risk Regarding Underlying Geologic Conditions
 - SEPTA will undertake detailed geotechnical studies to assess and characterize potential risks, and develop appropriate design solutions.
 - SEPTA will consult with PECO, PennDOT, the PA Turnpike Commission, Upper Merion Township and other Project study area stakeholders regarding geology conditions and appropriate design within their rights-of-way.
 - SEPTA would refine the alignment and design the structural supports in locations with suitable subsurface conditions.
 - SEPTA would build flexibility and redundancy into the design of the guideway and other structures to minimize potential subsurface problems and impacts.

CWVG Role

- **DEIS**

- Review and Provide Comments (Now Through 12/4)

- **FEIS**

- Participate in Refining Preferred Alternative
- Participate in Identifying Minimization and Mitigation Commitments
- Review and Provide Comments on the FEIS

- **Engineering**

- Participate in Development of the Preferred Alternative Design
- Participate in Development of Construction and Operational Plans

- **Construction and Operation**

- Participate in Refining Construction and Operational Plans
- Participate in Project Outreach Activities

DEIS Comment Period

- Start of Comment Period: October 13, 2017
- End of Comment Period: December 4, 2017
- Comments can be made by the following means:
 1. Submit comments through the Project website at www.kingofprussiarail.com
 2. Send an email to info@kingofprussiarail.com
 3. Send written comments to:

KOP Rail Project Mailbox
c/o McCormick Taylor, Inc. ATTN: ECW
Two Commerce Square
2001 Market Street, 10th Floor
Philadelphia, PA 19103
 4. Attend a public hearing and provide written or oral comments
- All comments, whether written, electronic or oral, are given equal consideration and become part of the official hearing record.

An Extension of the Norristown High Speed Line



Thank You!

www.kingofprussiarail.com

info@kingofprussiarail.com

www.twitter.com/KOPRail